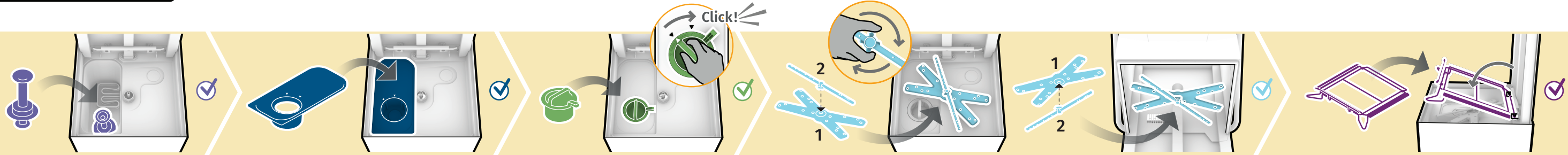
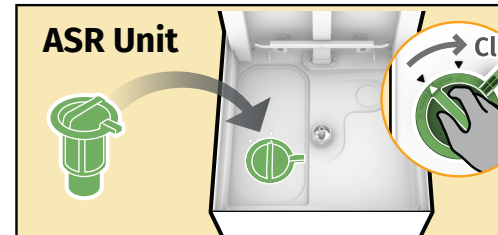
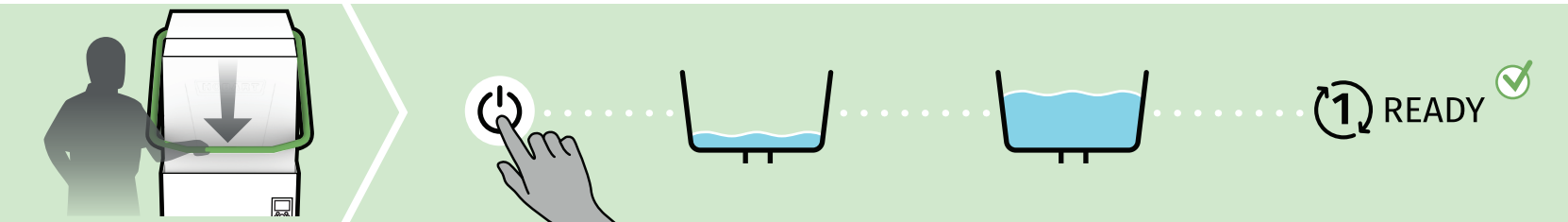


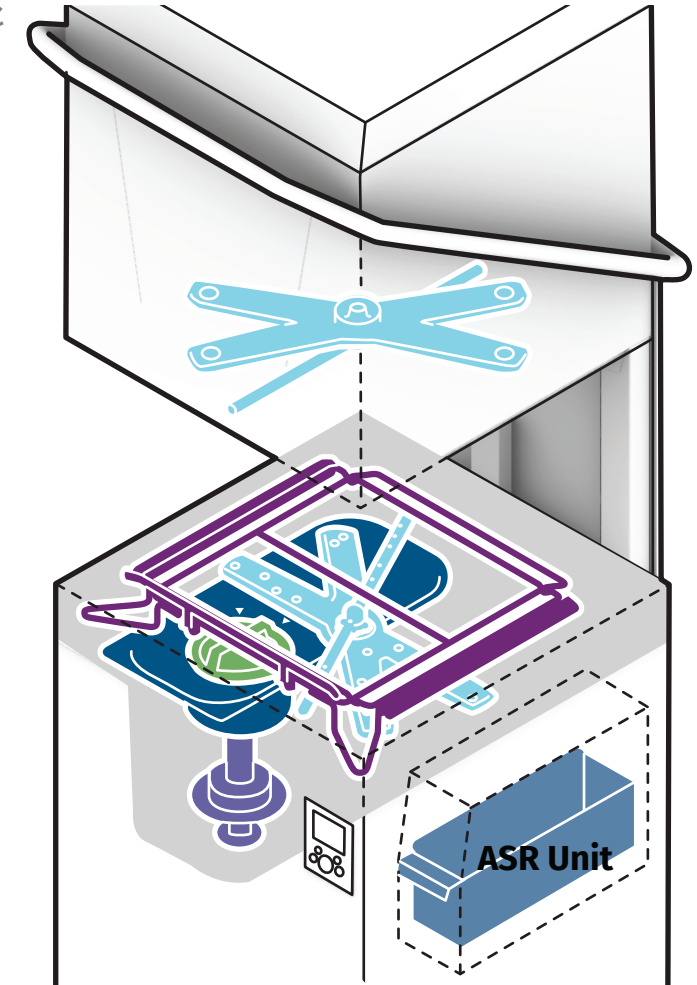
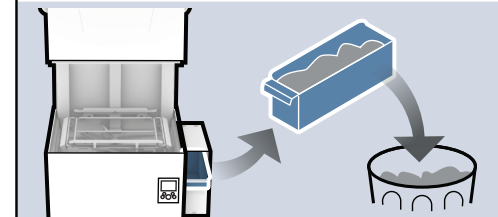
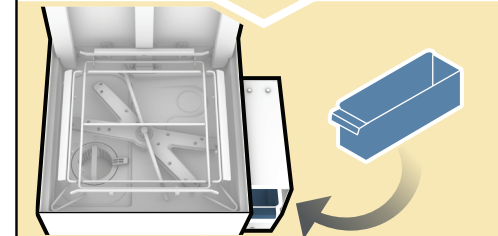
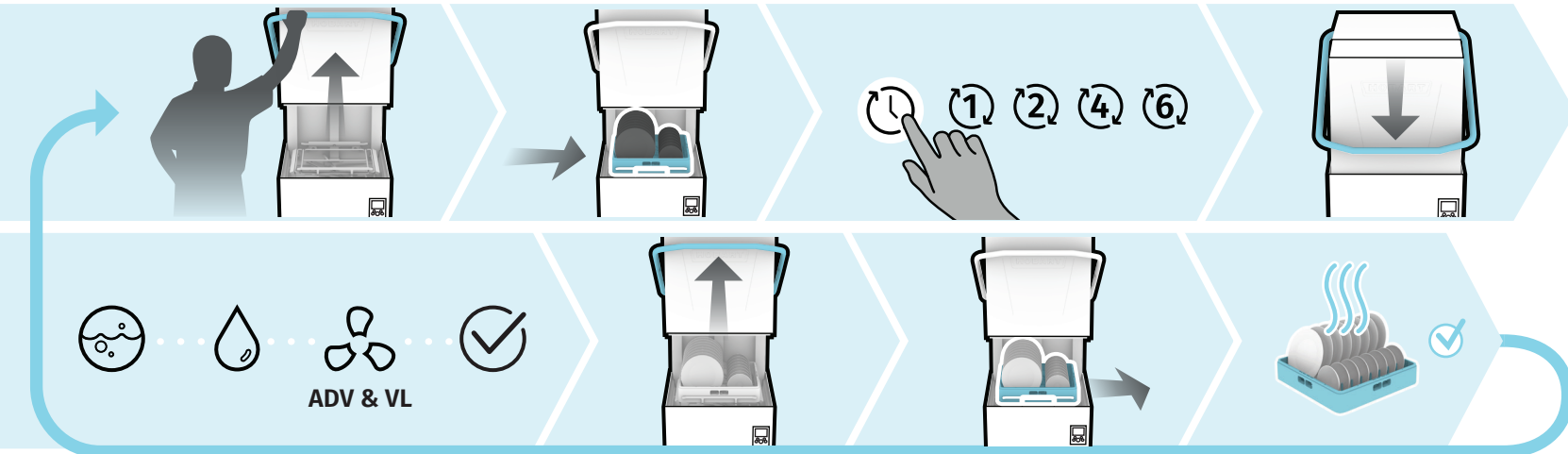
Assemble
Armar
Assembler



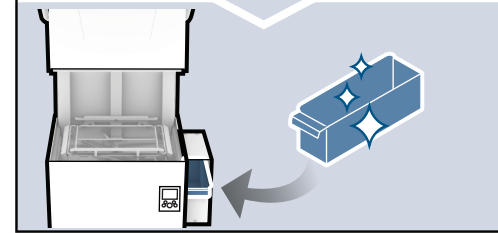
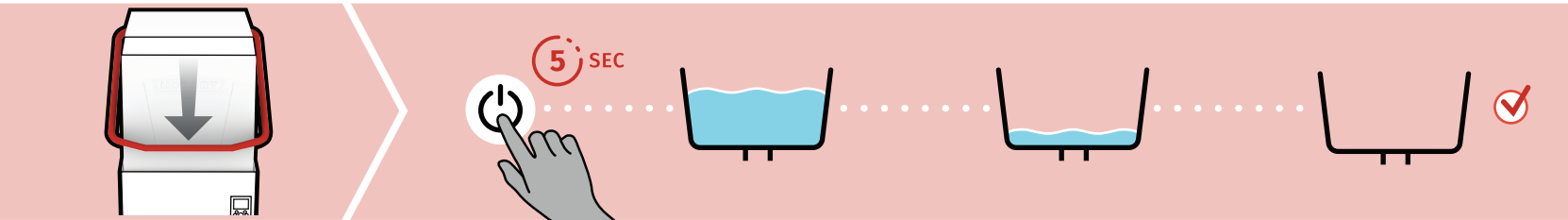
Startup
Puesta en marcha
Mise en marche



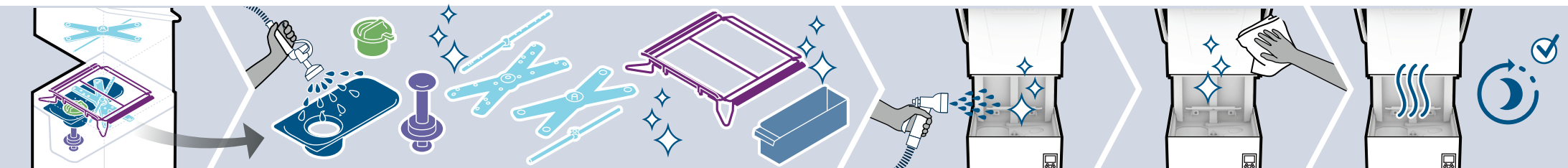
Cycle
Ciclo
Cycle



Shut Down
Apagar
Fermeture



Clean Up
Limpiar
Nettoyer



INSTRUCTIONAL VIDEOS
VIDEOS INSTRUCTIVOS
VIDÉOS INSTRUCTIVES

Operation Tips | Consejos de operación | Conseils d'utilisation

PRE-SCRAP DISHES
PLATOS PREVACIADOS
TREMPER LA VAISSELLE

DO NOT OVERLOAD RACKS
NO SOBRECARGUE LOS CESTOS
NE PAS SURCHARGER PAS LES PANIERS

CHECK CHEMICALS
COMPRUEBE LOS PRODUCTOS QUÍMICOS
VÉRIFIER LES PRODUITS CHIMIQUES

USE COMMERCIAL CHEMICALS ONLY
USE SOLO PRODUCTOS QUÍMICOS COMERCIALES
UTILISER UNIQUEMENT DES PRODUITS CHIMIQUES COMMERCIAUX

DELIME MACHINE AS NEEDED
DESCALCIFIQUE LA MÁQUINA
COMO SEA NECESARIO
DÉTARTRE LA MACHINE AU BESOIN